

Q-VET SERIES



Quantum
MEDICAL IMAGING
Division of Carestream



Veterinary Direct Digital Imaging Solutions

Q-VET-DRR

Q-VET-DRR Systems bring veterinary technicians today's cutting edge x-ray technology right to their finger tips. This system allows for any veterinary clinic to efficiently crossover into the world of digital imaging. The Q-VET-DRR allows for a much greater exam through-put, the very best image quality while reducing x-ray exposure. The "MaxxVue" software enhances the postprocessing of the digital images allowing for a greater flexibility, manipulation and management of the acquired images.

Q-VET DRR (Digital Radiography) Specifications

Generator

- 40 kW ULTRA High Frequency X-Ray Generator (120 kHz) - *other x-ray generator power available*
- "EZ Vet-Control" - LCD Color Display with High Resolution Viewing

Table and Tubestand

- Integrated Tubestand with 40" SID, Fixed Position at Center of Receptor
- "Four-Way Float-Top Enclosed Table", with Electronic Foot Control
- 650 lb Table Patient Weight Capacity
- "URO-TRACK" System
- 29.5" Longitudinal Travel, 5" Transverse Table (Electric)
- Collimator: Certified for Safety (Meets FDA Requirements for Animals)
- "Light Localizer" for Field Size
- "Laser Feature" for Accurate Animal Positioning
- Collimator Light is activated when Float-Top Foot Control is depressed
- Exposure Foot Switch (2 Position) For Rotor and X-Ray
- Large Imaging Area: 47" Complete Coverage

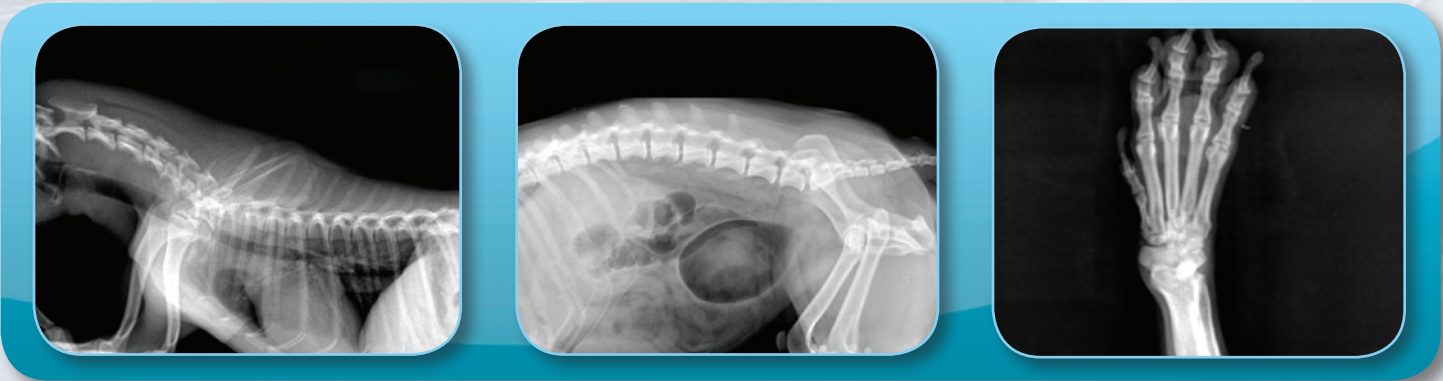
Digital Detector Specifications

- 3.1 lp/mm Image Resolution
- Gadolinium-Oxysulfide Scintillator
- 14" x 17" Field of View

Available Digital Detector Upgrades

- "QXR9": 3.5 lp/mm, with 17" x 17" Field of View (Gadolinium-Oxysulfide or Cesium Scintillator)
- "QXR16": 4.6 lp/mm, with 17" x 17" Field of View (Gadolinium-Oxysulfide or Cesium Scintillator)





Q-VET-DRR

Cost effective benefits of Digital Radiography

The Q-VET-DRR delivers quick study results and image evaluation. Electronic archiving allows for great space savings while eliminating the costs of film at the same time. This results in increased workflow and overall client satisfaction.

Quantum-6MP-Dog-VD_01 (F)
0010755
3 Y
6/4/2009
0212

6/5/2006 3:36:16 PM
Index : 2

135 mm

Level : 2324
Window : 2978

71.88%
Laterality : U
Step :

0010755 [F]
Quantum-6MP-Dog-VD...



Q-VET-FTX

Veterinary Radiographic Systems



EZ-VET Control
Control study parameters on LCD screen at tube side.

Collimator
FDA approved for human use. The Q-VET Series Collimators are of the highest quality assuring safety of your staff by greatly reducing exposure during procedures.

Float Top Table
Floating table allows for quick repositioning the animal during the examination.

Laser Line & Light Field
Laser light and the light field provide for accurate positioning of the animal

URO-Track
Specifically designed track for easy clean ups during an examination.

Float Top Table Control Lock

Foot Control X-Ray Exposure Switch

Distinguished System Features for Q-VET-FTX

- QS-500 Series Radiographic Tubestand integrated to Table
- Vertical Travel of 41.5" (105 cm), Longitudinal Travel of 32" (81 cm)
- Electromagnetic Tube Angulation of +/- 135°, with detents at 0°, +/- 90°
- "Four-Way Float-Top Enclosed Veterinary Table" with Electronic Foot Control



Q-VET System Features

- 32 kW ULTRA High Frequency Generator (other x-ray generators available - consult factory)
- “EZ-VET- Control” - *LCD Color Display with High Resolution Viewing*
- Collimator: Certified for Safety (*Meets FDA Requirements for Human Use*)
- “Light Localizer” for Field Size
- “Laser Light Feature” for Accurate Patient Positioning
- 650 lb Patient Capacity Table
- “URO-TRACK” System
- Includes 4 Patient “tie-down” Cleats

Q-VET-FX



Distinguished System Features for Q-VET-FX

- QS-500 Series Radiographic Tubestand integrated to Table
- Vertical Travel of 41.5” (105 cm), Longitudinal Travel of 32” (81 cm)
- Electromagnetic Tube Angulation of +/- 135°, with detents at 0°, +/- 90°
- “Open Style Veterinary Table” with longitudinal travel of the receptor

Q-VET-ITT



Distinguished System Features for Q-VET-ITT

- Integrated Tubestand with 40” SID, Fixed Position at Center of Receptor
- 29.5 Longitudinal Travel, 5” Transverse Table (Electric)
- Collimator Light is activated when Float-Top Control is in use
- Exposure Foot Switch (2 Position)
- Easily Upgrade to Direct Digital (DR-Ready System)
- “Four-Way Float-Top Enclosed Veterinary Table” with Electronic Foot Control



Q-VET- Ceiling Mounted Systems for Zoo's and Large Animal Facilities



Distinguished System Features for Ceiling Mounted Systems

- Extra Wide 35" Float Top Table (Elevating Optional)
- 650 lb. Patient Weight Capacity
- X-Ray Generators up to 80 kW available

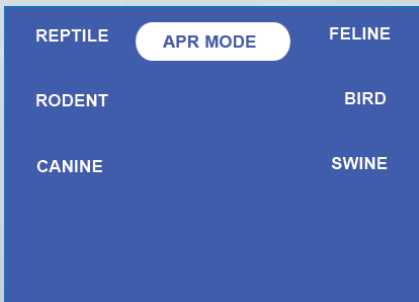


Centralized hand grips with dual soft-grips provide smooth, responsive system adjustments. Positioning of the x-ray tube is directed through a series of color-coded fingertip switches on the operator hand control, which coincide with the colors on the various rails, for vertical, horizontal and transverse movements. A convenient "All-Locks" release switch is built into each of the soft-grip controls. Lighted display windows indicate system navigation for SID, tube angle and lock functions, to assist the operator with easy and precise positioning. The table has a 650 lb. patient weight capacity, designed for large animals.

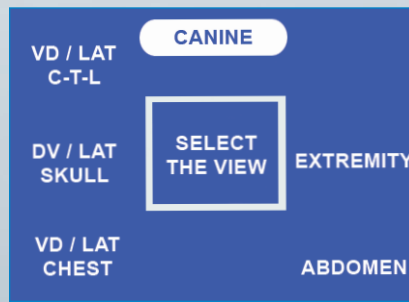


EZ-VET Control

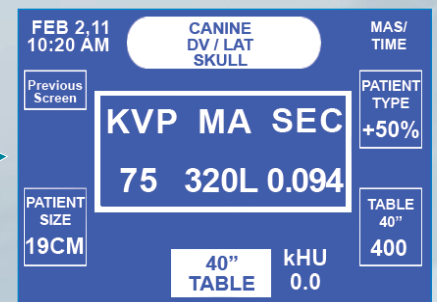
Standard on All Q-VET Systems (Except Ceiling Mounted)



SELECT ANIMAL TYPE FROM APR MENU



SELECT DESIRED VIEW FROM MENU



ENTER DESIRED SETTINGS
• READY FOR EXPOSURE •

With Ultra High Frequency Technology, the EZ-VET Series generator integrates revolutionary design with superb functionality, designed for both digital and conventional imaging. The EZ-VET Series generator operates at a near-constant potential of up to 120 kHz – the highest in the industry, which equates to greater image quality. It also translates into shorter exposure times; reducing the chance that animal motion might affect examinations.

Generator Operating Modes

The EZ-VET Series enables users to select from three main operating modes (3 point, 2 point or 1 point), offering great versatility for pre-programmed or customized imaging.

*In all operating modes, the user always has the capability to override any technique parameter individually, providing uncompromising flexibility and control.

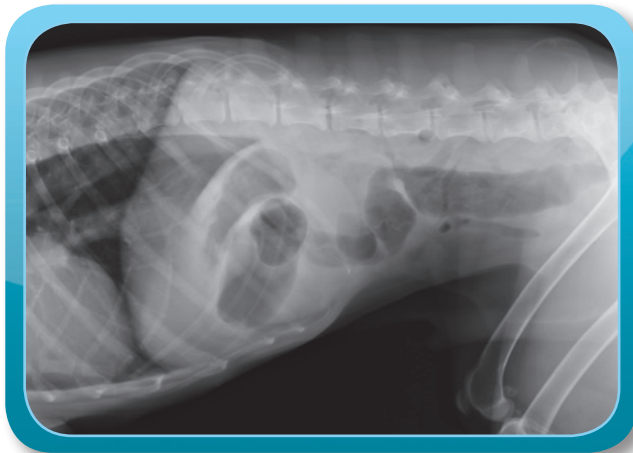
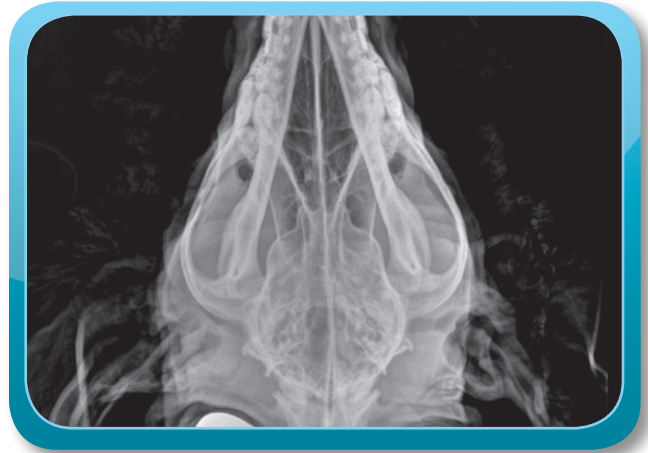
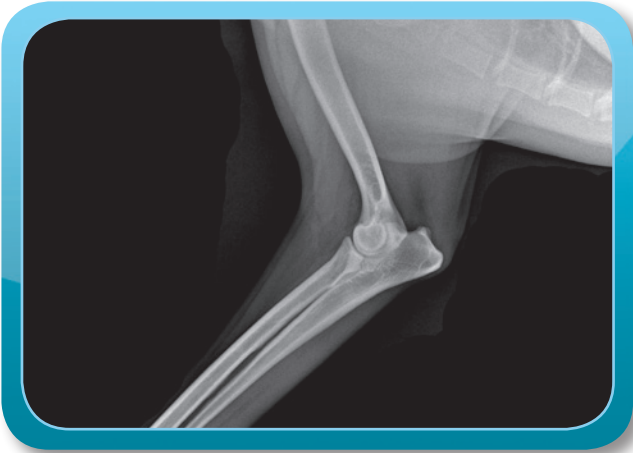
Stored Energy (SE) X-Ray Generators

Quantum's advanced Stored Energy (SE) technology permits powerful operation using only a standard "low amperage" wall outlet or alternate power source. The SE's power cells are virtually maintenance-free and provide years of usage. These units are ideal in facilities where incoming power is unavailable. (50kW to 20kW)



Quantum Medical Imaging

Pioneering technology from the premiere innovator in veterinary imaging...



Corporate Overview

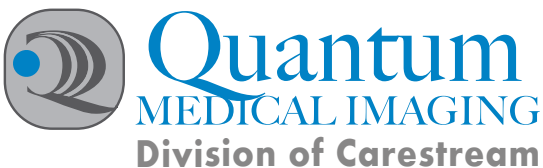
Quantum Medical Imaging is a highly innovative company which designs and manufactures high quality veterinary radiographic systems for veterinary hospitals and imaging centers around the world. The company's mission is to supply the radiographic imaging industry with superior products for enhanced diagnostic capability.

Designed for Technologists

Designed by a team of engineers with extensive input from technologists, Q-VET systems are highly refined for logical and efficient operation. This unique approach to system development simplifies radiographic examinations and assures that Quantum products meet the growing needs of radiology. Quantum's technology is proven in hundreds of veterinary installations worldwide.

Support

All Q-VET Series Systems are supported by Quantum IT, Digital Imaging, and X-Ray specialists. You can rest a sure knowing all aspects of your system is fully cared for.



Quantum Medical Imaging, LLC | Division of Carestream
2002 Orville Drive North
Ronkonkoma, NY 11779 USA
Tel (631) 567-5800
Fax (631) 567-5074
www.quantumvet.net